

Human evolution: Reasons for adaptation and migration routes



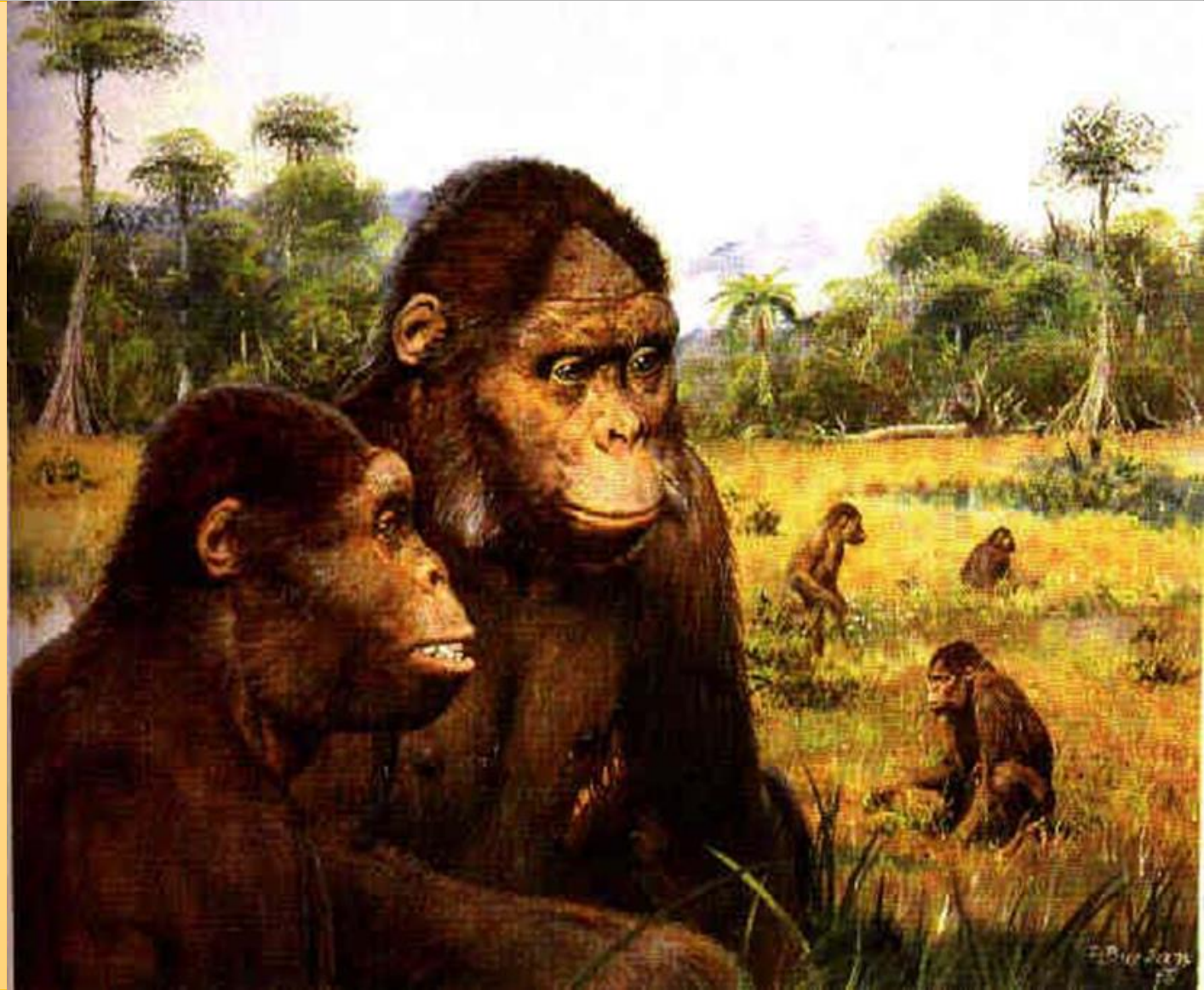
Delmer Tzib
SJC

Objectives

- Explain the factors that lead to changes in evolution.
- Outline the two migration routes taken to migrate out of Africa.

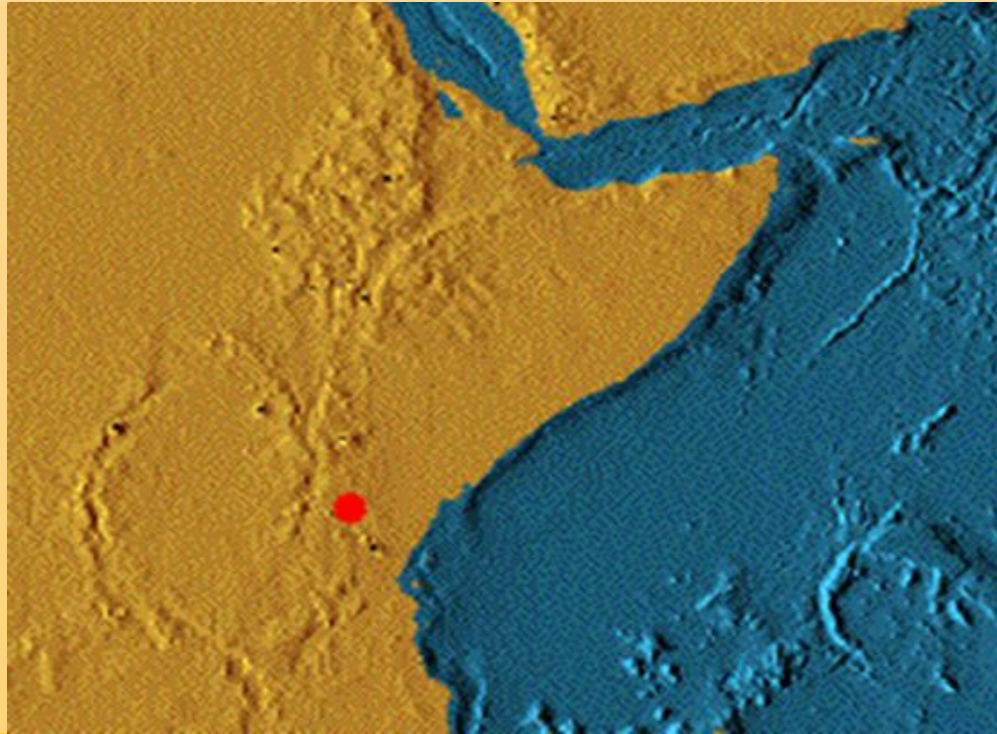
What caused evolution?

- The majority of northern Africa was rainforest.



The Great rift created

- 5 million years ago changes occurred!
- The great rift valley was created in eastern Africa



Changes of environment

- Change in climate changed the landscape from rainforest to savannah.
- Apes developed a new form of transportation; the ability to walk upright.



What it caused?

Due to climatic change, environmental changes and animal migrations homo erectus and homo sapiens moved out of Africa.

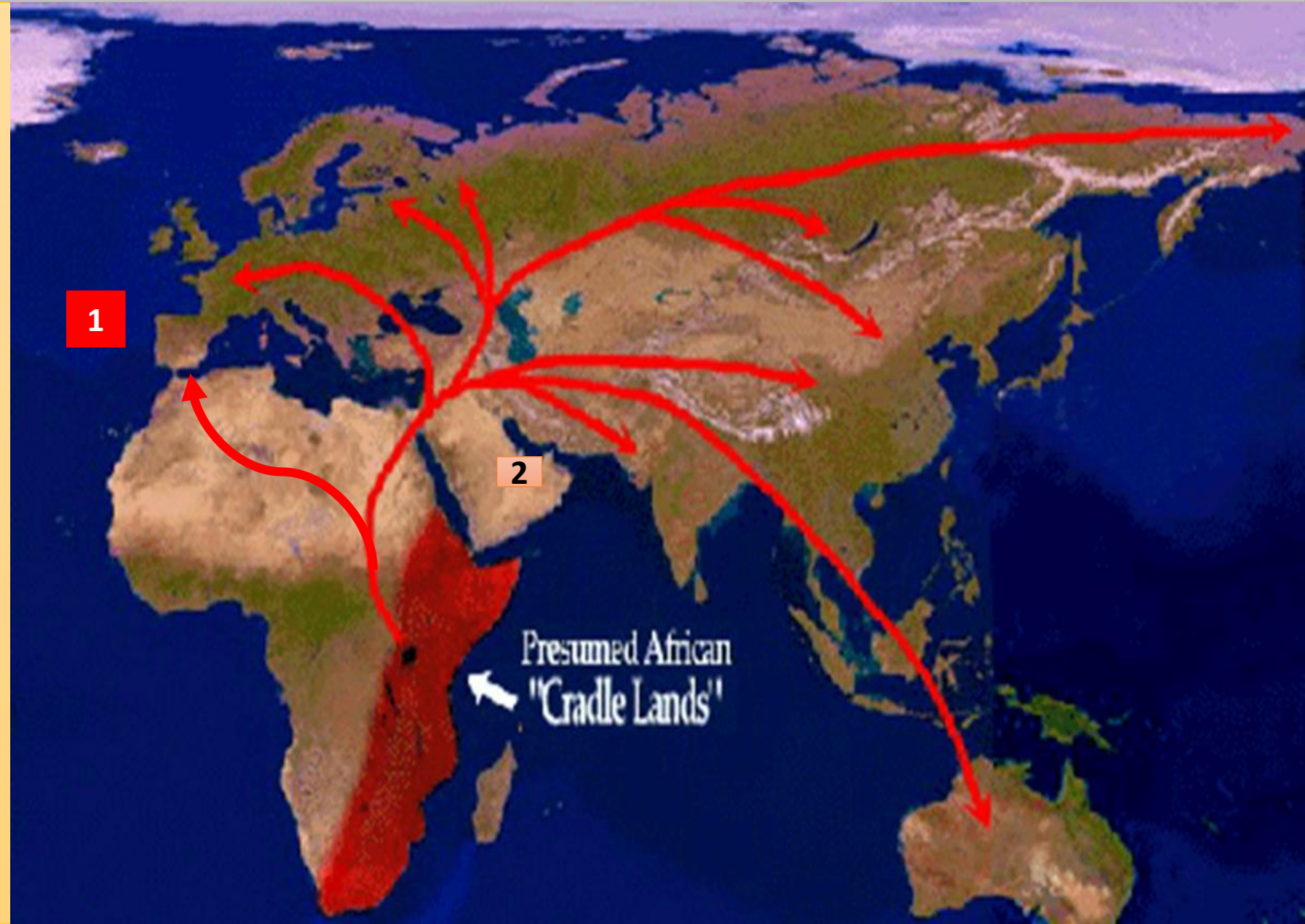
- Hunter-gatherers
- Animals migrated out of Africa

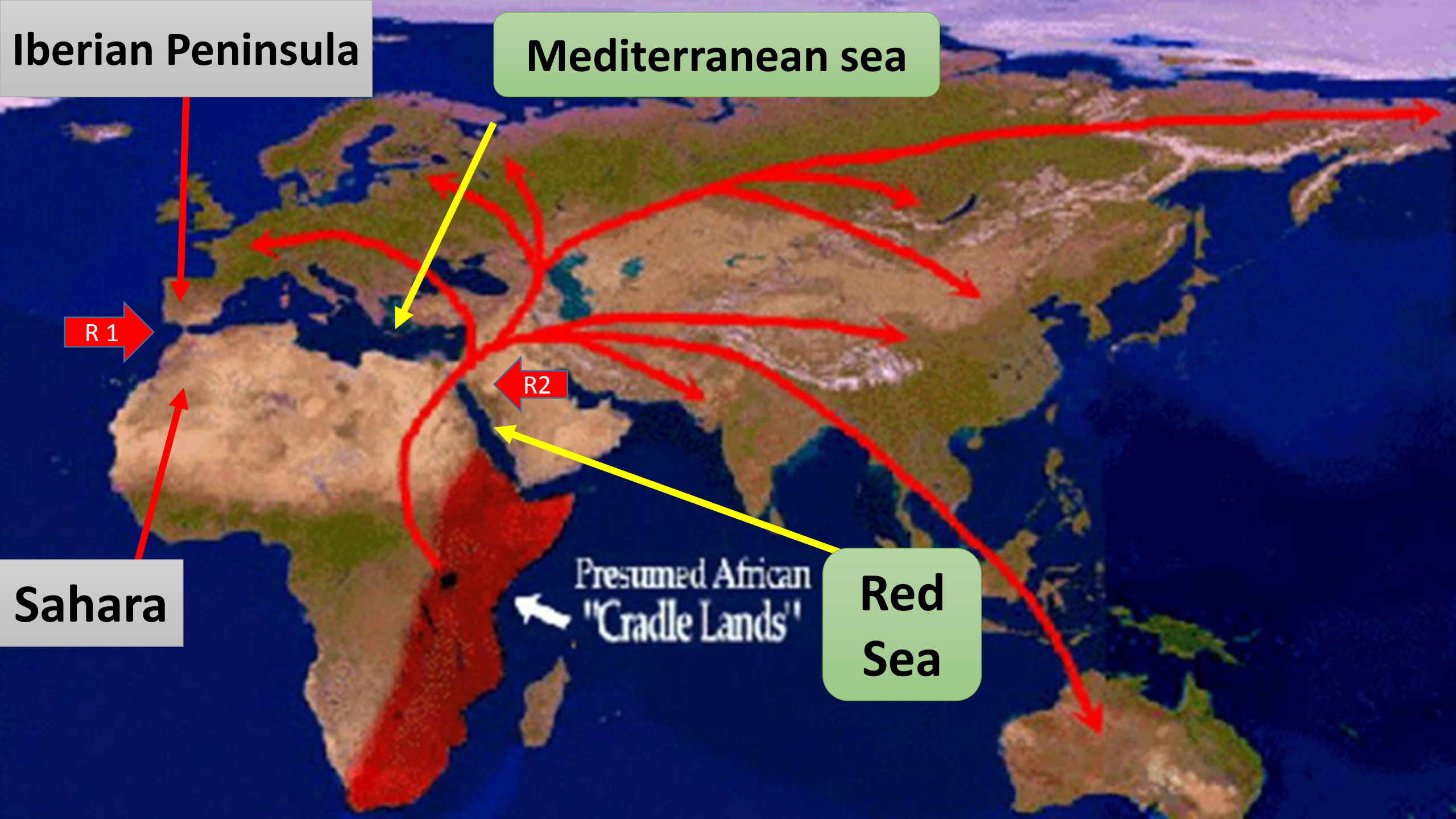


Migratory routes out of Africa: Cheik Anta Diop

1) Migrated through the Sahara into the Iberian peninsula (Europe)

2) Isthmus separating the Mediterranean sea from the red sea





Iberian Peninsula

Mediterranean sea

R 1

R 2

Sahara

Red Sea

Presumed African "Cradle Lands"

Due Environment and geographical location changes occurred

- Africanoid- Black, brown
- Mongoloid- Yellow
- Caucasoid- White

They migrated
into Europe
which was cold

Homo-sapiens were
trapped
There was almost no
sun

Homo sapiens adapted!

Changes came!

- Change in skin color (Melanin a pigment in the skin)
- Facial change
- Nasal index- Narrower nose

