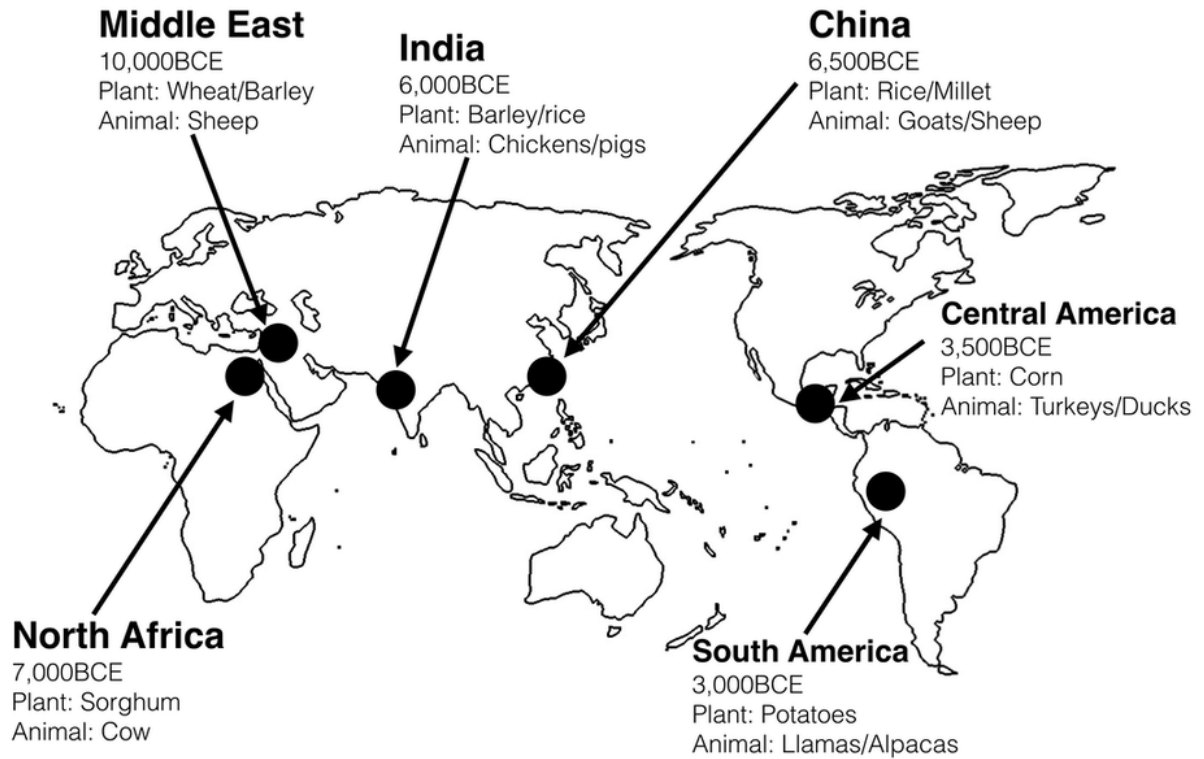


EXAM STUDY GUIDE

(yasser musa/ 1A + 1C – dec.2019)

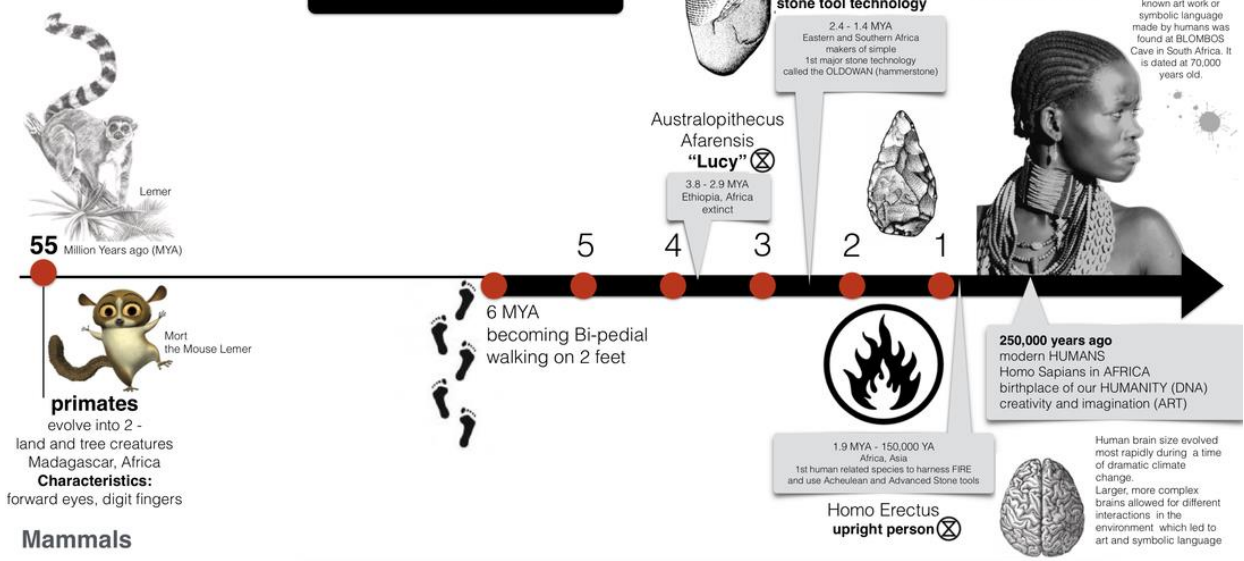
Rationalism,
Homo Habilis
Bi-pedal
Blombos
Laetoli
Mammals
Nubia
Corn
Charles Darwin,
Change and Continuity
Cooperative learning
Homo Erectus
Worldview
Sorghum
Helium
Lucy
Alluvial
Ostrich Egg
San
Sorghum
Foraging
Aguas Turbias
Monotheism
Achulean
Latitude
Bacteria
Unkulunkulu
Neil de Grass Tyson
Limestone
Coral Reef
Garbutts Falls

Areas of **Agricultural development** (10,000 - 3,500 BCE)

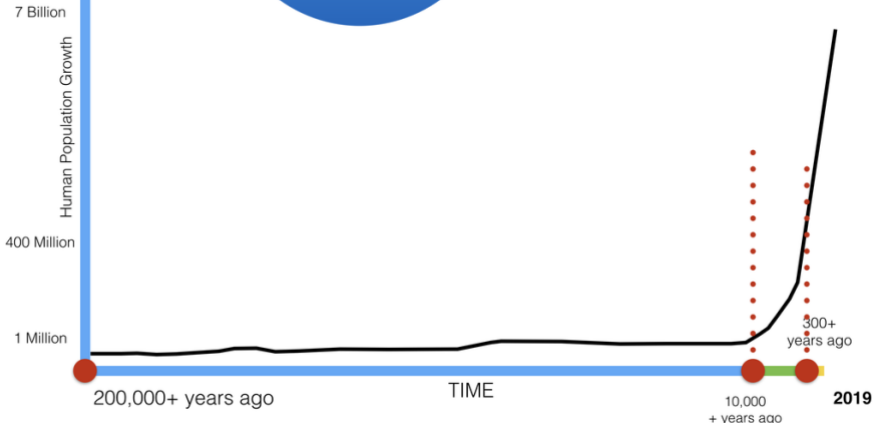
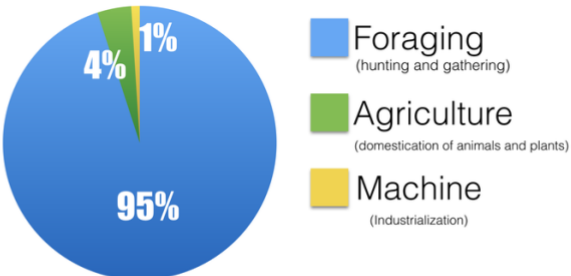


Study the TIMELINE from BIG BANG to Life on Earth (Big Bang = 13.7 BYA to Life on Earth = 1BYA)

Transformations: Evolution, Bi-pedalism, Stone Tool Technology, Symbolic Language



Human Lifestyles



Study the Maya and Zulu Creation Stories

Longitude and Latitude



KEY TERMS:

Equator | Longitude | Latitude | North Pole | South Pole | Northern Hemisphere | Southern Hemisphere

REVIEW THIS POEM – think about the meaning, what is the poet saying about the Universe, what is his view of the world?

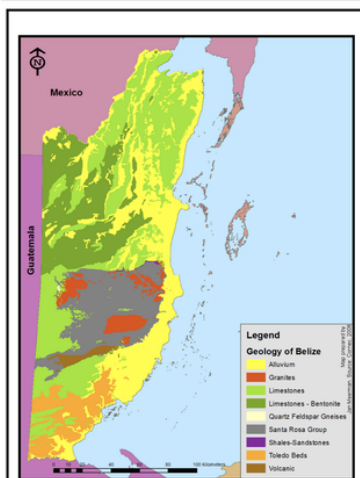
The Most Astounding Fact

These ingredients become part of gas clouds, that condense, collapse, form the next generation of solar systems, stars with orbiting planets, and those planets now have the ingredients for life itself.

So when I look up at the night sky...
I know that,
yes, we are part of this universe,
we are in this universe,
but perhaps more important than both of those facts...

What does it mean to be human? (check your notes for this)

Study the key characteristics of the Foraging Life and the Agricultural Life.

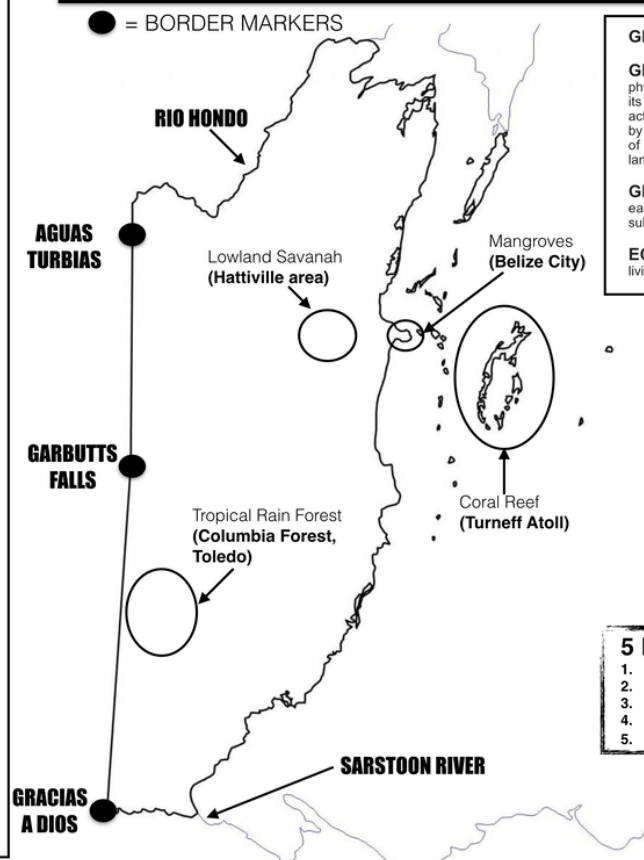


ALLUVIUM - a fine-grained fertile soil deposited by water flowing over flood plains or in river beds. Alluvial gravel carried by rushing streams and deposited where the stream slows down.

LIMESTONE- a hard sedimentary rock, composed mainly of calcium carbonate or dolomite, used as building material and in the making of cement.

GRANITE - is nearly always massive (i.e., lacking any internal structures), hard, and tough.

Belize: Borders, Geology + Geography



GEO - related to the EARTH

GEOgraphy the study of the physical features of the earth and its atmosphere, and of human activity as it affects and is affected by these, including the distribution of populations and resources, land use, and industries.

GEOlogical - the study of the earth's physical structure and substance.

ECOsystem - community of living organisms

5 ECOSYSTEMS

1. TROPICAL RAINFOREST
2. CORAL REEF
3. SAVANNAH
4. RIVERS
5. MANGROVES